

Trauma Informed Oregon

Regional Research Institute for Human Services,

Portland State University 1600 SW 4th Ave. Suite 900 Portland, OR 97201

Phone: 503-725-9618

Email: info@traumainformedoregon.org



Overview of the Road Map to Trauma Informed Care

<https://traumainformedoregon.org/roadmap-trauma-informed-care/>

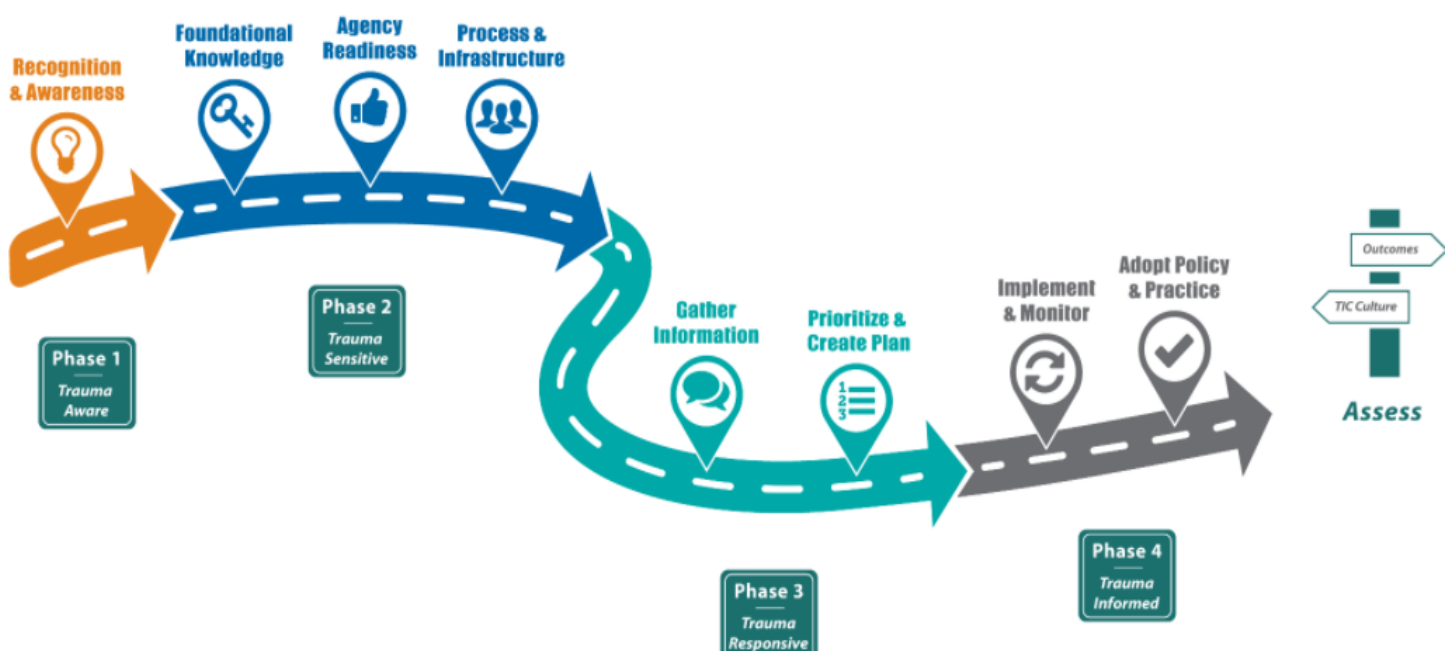
Trauma Informed Oregon is a collaboration of university, public and private partners, individuals with lived experience, youth and family members that are committed to creating and sustaining a trauma informed system of care in Oregon.

Trauma informed care is not one-size-fits-all. There is a great deal of variability in the way trauma informed care is demonstrated. However, what we've learned about trauma informed care (TIC) implementation is that there are some common features.

The [Road Map to Trauma Informed Care](#) introduces a developmental phased approach to organizational change and implementation. This tool illustrates the sequential movement from recognition and awareness (Phase 1: Trauma Aware) to implementation and monitoring (Phase 4: Trauma Informed). The Trauma Informed Care (TIC) Screening Tool goes one step further by outlining a developmental approach across the phases (from Phase 1 to Phase 4) but also within the phases (actions for each step). We recognize that there are many actions within some of these steps (Agency Readiness, for example, has seven).

Programs, organizations, and systems that make a commitment to implementation will differ in many ways—from the service context, to the motivation for change, to hoped-for outcomes, and resources available. Nonetheless, in a developmental way, implementation moves through a number of common steps that TIO have tried to reflect in the Road Map below.

ROAD MAP TO TRAUMA INFORMED CARE (TIC)



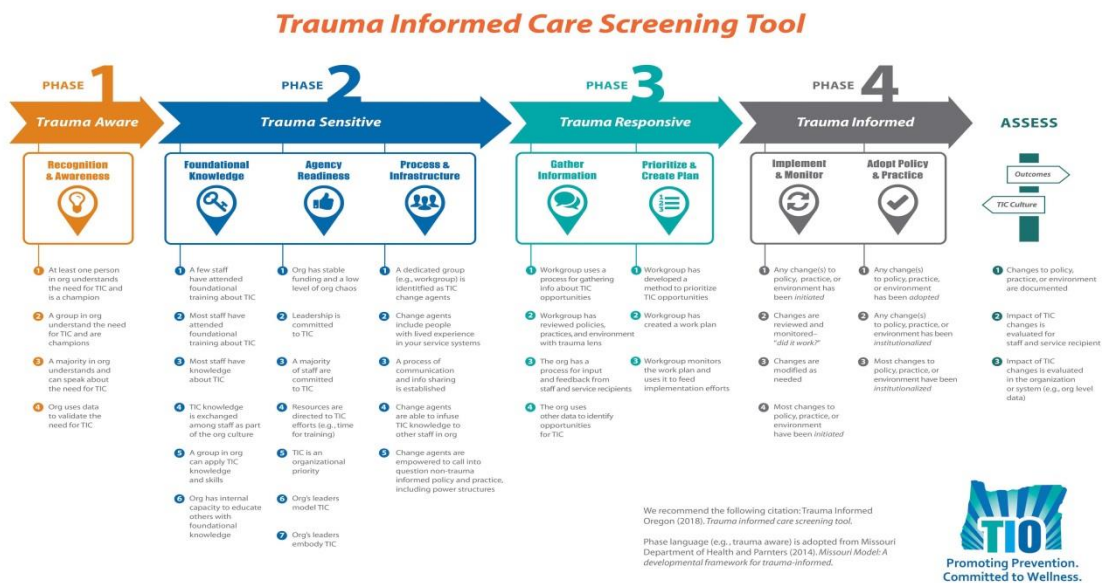
Using the Screening Tool



The Trauma Informed Care Screening Tool builds on the Road Map by delving into each phase and offering a series of developmental actions within each step. These tools go hand in hand.

We also recognize that there are degrees to which something has been achieved (e.g., a few staff have attended training versus most staff have attended training). The intent of the TIC Screening Tool is to represent this progress.

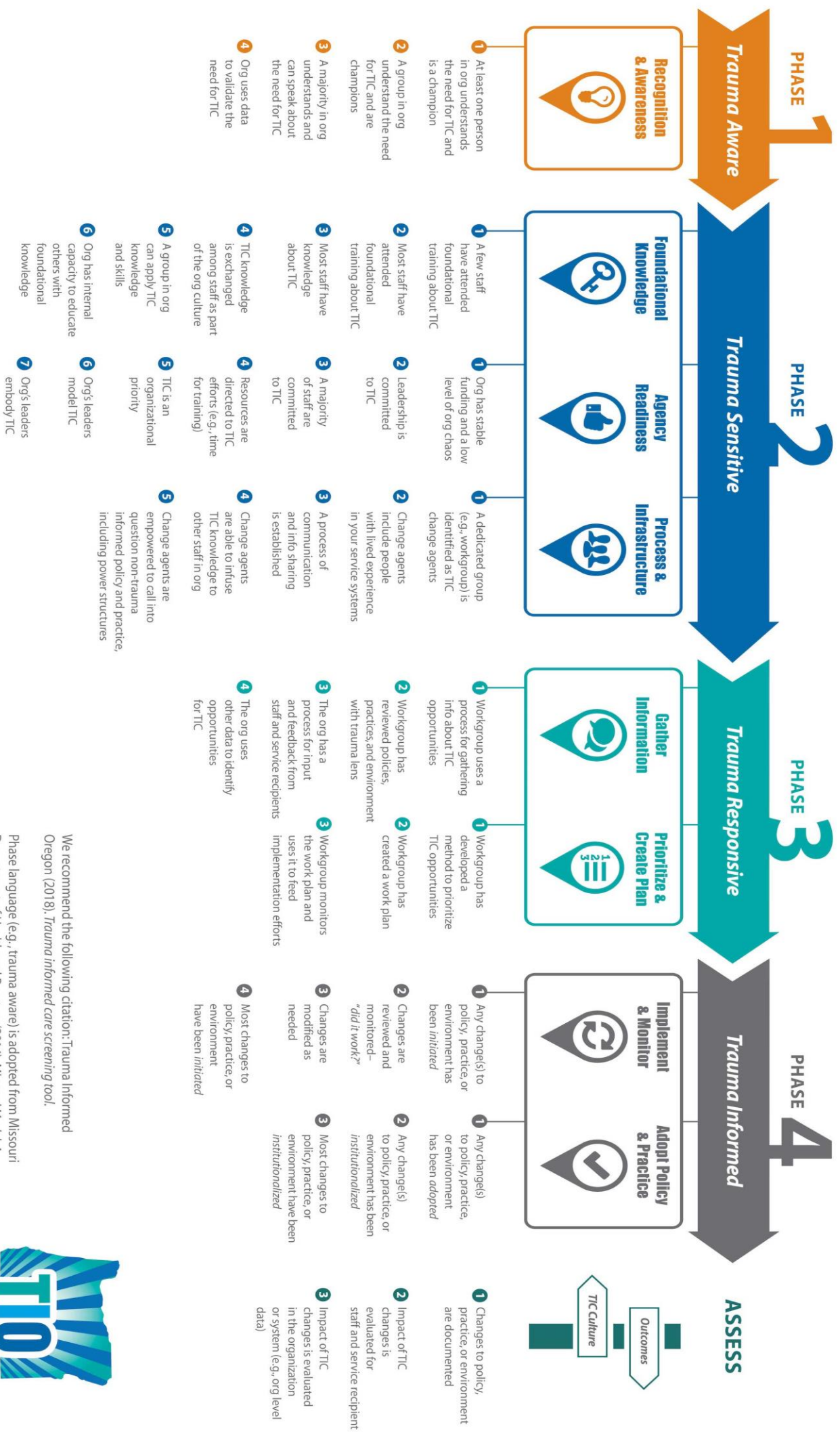
This tool has been created to assist organizations implementing TIC. You can begin by circling the steps that have either been started or completed in the organization. From there, we encourage you to use it in whatever ways make the most sense for your organization.



The following are additional considerations.

- Agencies or programs may use this tool as a way to highlight progress.
- Agencies or programs may find this tool most useful in understanding why they are encountering resistance. In other words, rather than a prescription for moving forward, they use the tool retrospectively to identify potential obstacles for progress.
- There is no expectation that an agency or program will accomplish every action listed. Furthermore, an agency may be doing other things to create TIC that we have not captured here.
- Some of the actions will be more important for some agencies than for others. Feel free to adapt however is needed.
- There is no correct way to implement TIC. Some agencies may find that they are accomplishing the first few actions of each step across several of the phases, while others may find that they are delving more deeply into one phase at a time.

Trauma Informed Care Screening Tool



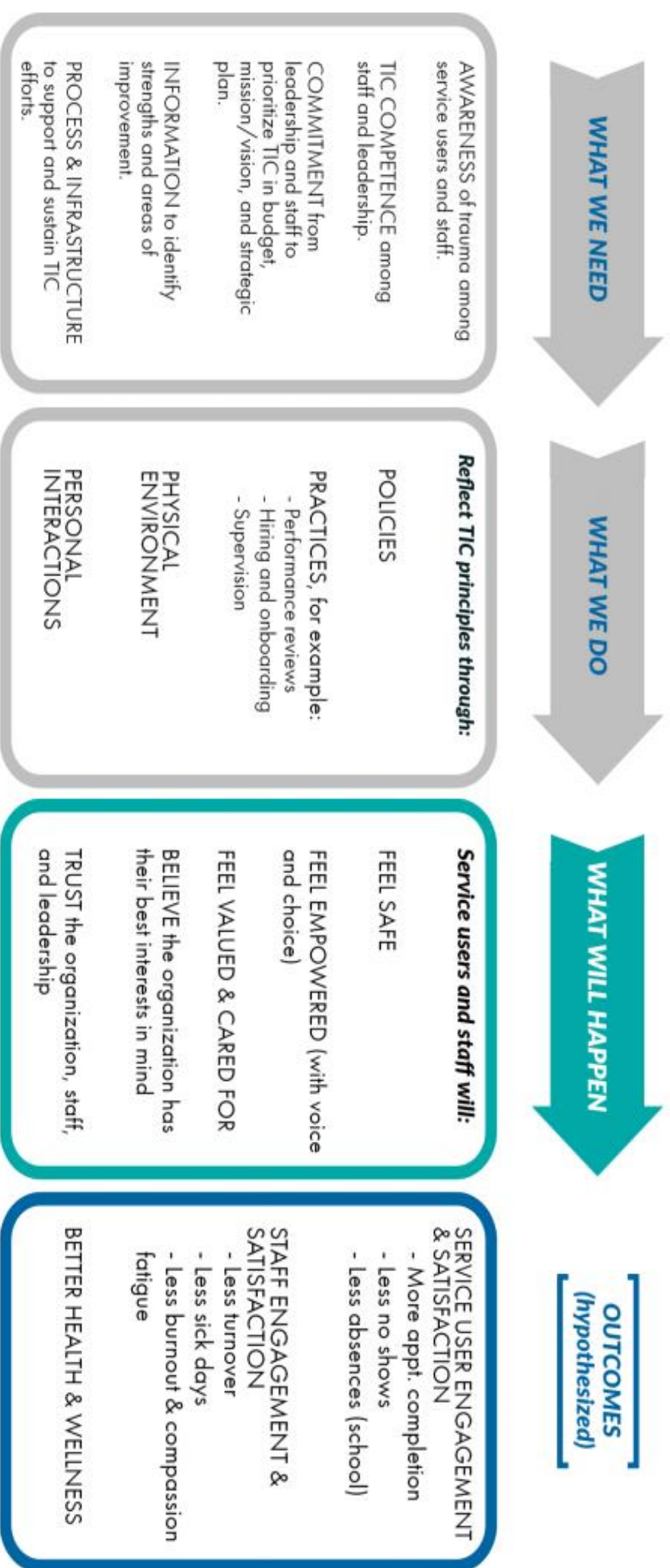
We recommend the following citation: Trauma Informed Oregon (2018). *Trauma informed care screening tool*.

Phase language (e.g., trauma aware) is adopted from Missouri Department of Health and Parnters (2014). *Missouri Model: A developmental framework for trauma-informed*.



Promoting Prevention.
Committed to Wellness.

Trauma Informed Care Logic Model



Assumptions

1. Human service settings are populated with people (service users and staff) with experience of past or present trauma.
2. Services and settings can be re-traumatizing for individuals when they feel unsafe or don't feel that they have control, power, choice, voice, or value.
3. Trauma informed care takes these challenges into account and creates services and settings that are safe, empowering, trustworthy, collaborative, and responsive to cultural, historical, and gender issues (based on TIC principles).